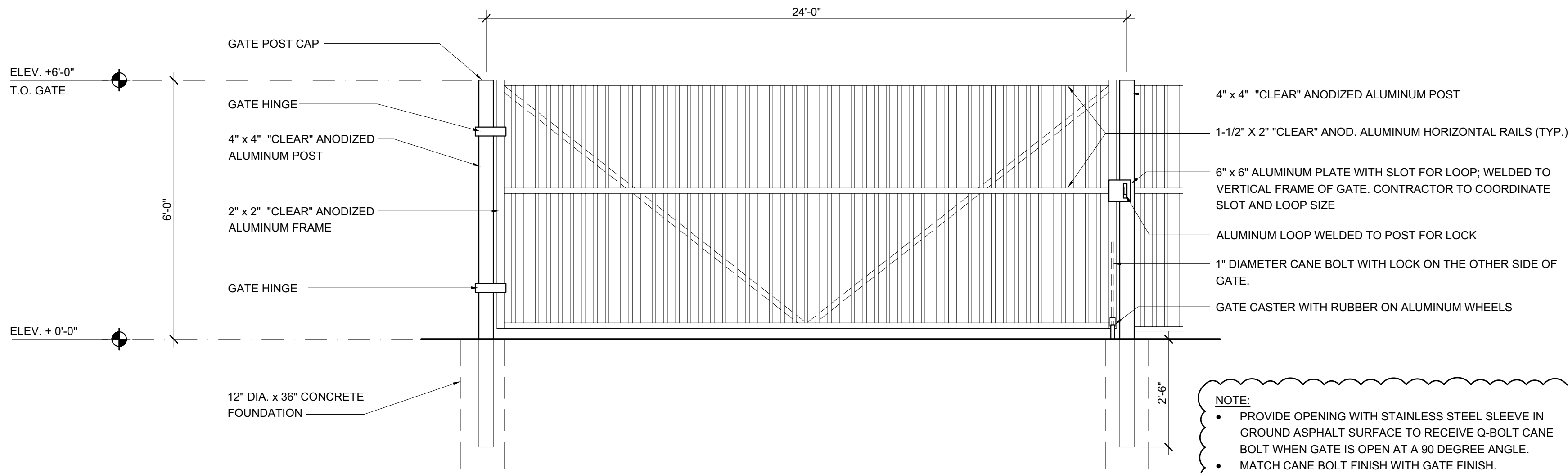


PEDESTRIAN GATE



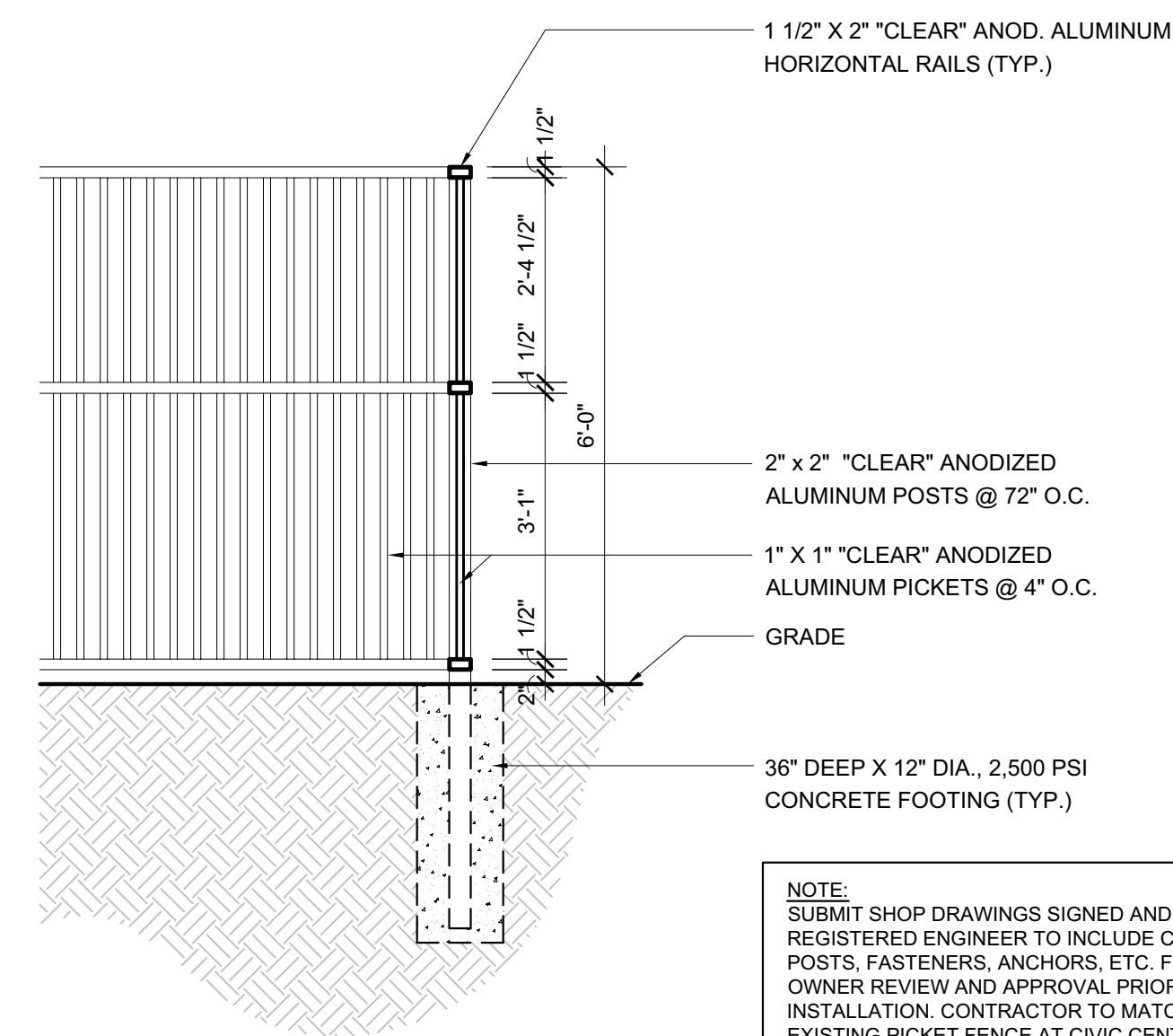
VEHICULAR GATE

- NOTE:
- PROVIDE OPENING WITH STAINLESS STEEL SLEEVE IN GROUND ASPHALT SURFACE TO RECEIVE Q-BOLT CANE BOLT WHEN GATE IS OPEN AT A 90 DEGREE ANGLE.
  - MATCH CANE BOLT FINISH WITH GATE FINISH.
  - KNOX BOX PADLOCK ON VEHICULAR GATE

NOTE:  
SUBMIT SHOP DRAWINGS SIGNED AND SEALED BY A FLORIDA REGISTERED ENGINEER TO INCLUDE CALCULATIONS, FOOTERS, POSTS, FASTENERS, ANCHORS, ETC. FOR ARCHITECT AND OWNER REVIEW AND APPROVAL PRIOR TO FABRICATION AND INSTALLATION.

1 TYPICAL ALUMINUM PICKET GATE DETAIL

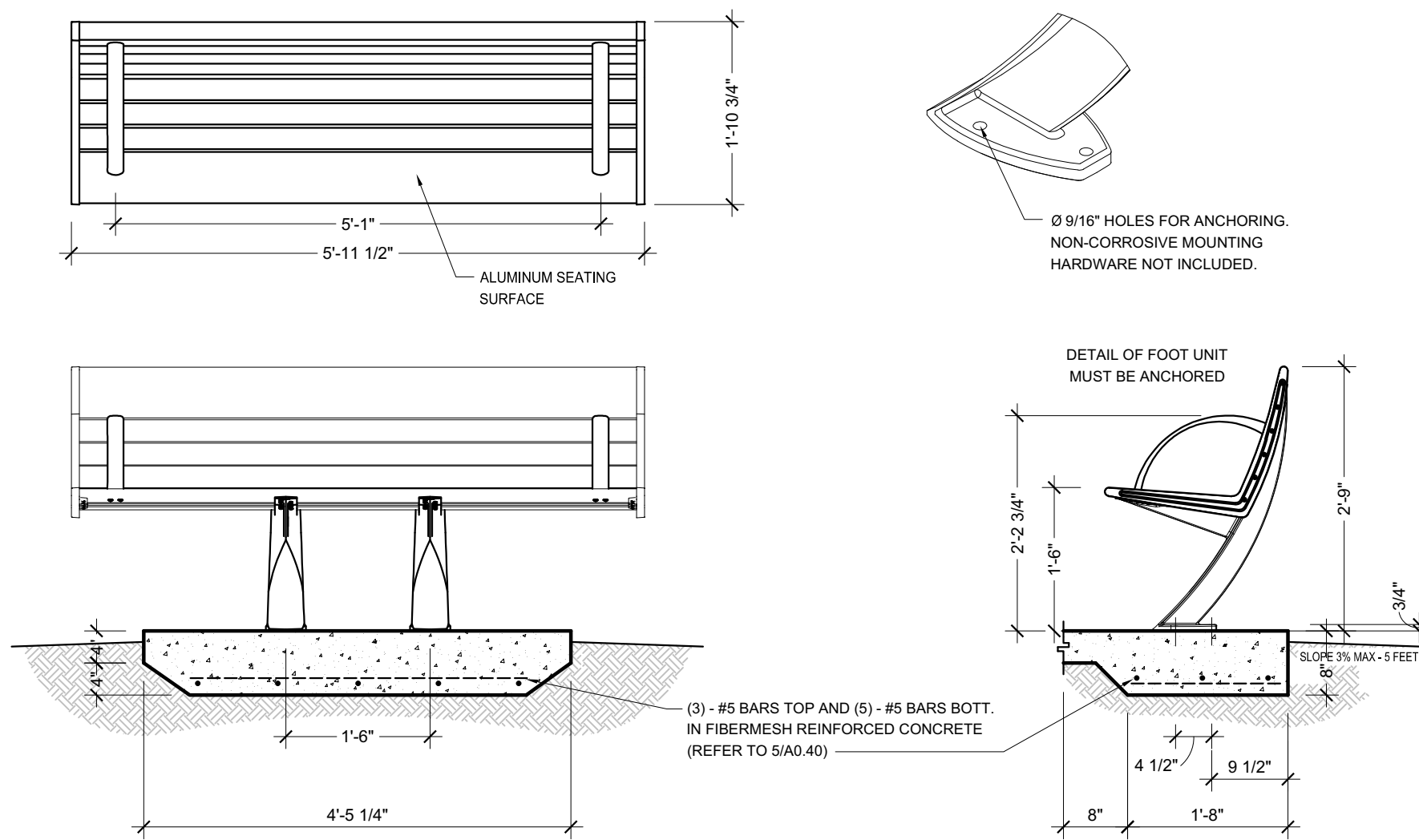
SCALE: 1/2" = 1'-0"



NOTE:  
SUBMIT SHOP DRAWINGS SIGNED AND SEALED BY A FLORIDA REGISTERED ENGINEER TO INCLUDE CALCULATIONS, FOOTERS, POSTS, FASTENERS, ANCHORS, ETC. FOR ARCHITECT AND OWNER REVIEW AND APPROVAL PRIOR TO FABRICATION AND INSTALLATION. CONTRACTOR TO MATCH NEW FENCE WITH EXISTING PICKET FENCE AT CIVIC CENTER.

POSTS:  
2" x 2" "CLEAR" ANODIZED ALUMINUM POSTS @ 72" O.C. SET ALL POSTS IN 36" DEEP x 12" DIAMETER 2,500 PSI CONCRETE FOOTING. PROVIDE SLEEVE, SET IN NON-METALLIC GROUT, 30 INCHES.

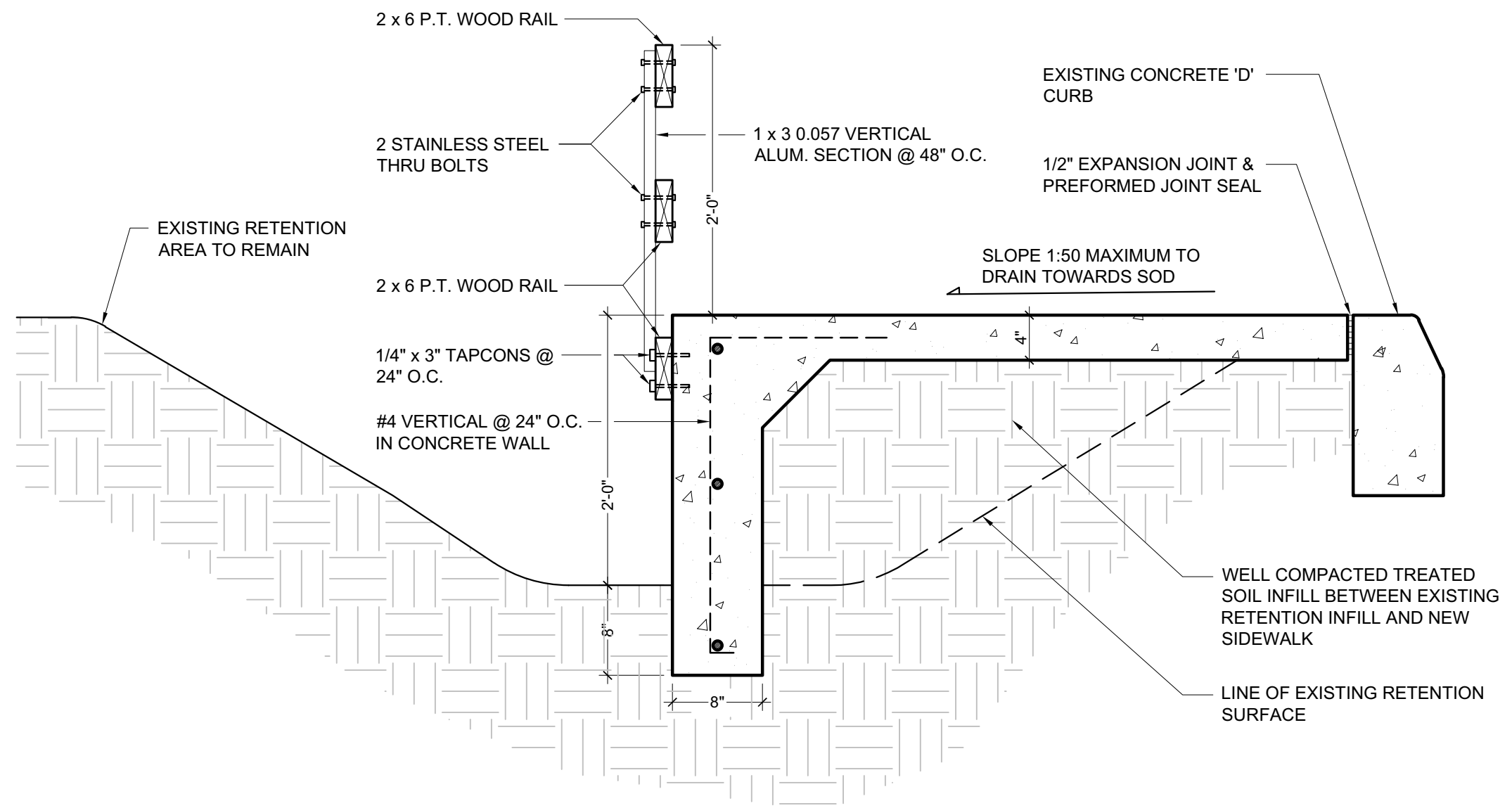
PICKETS: 1" x 1" "CLEAR" ANOD. ALUMINUM



NOTE:  
CONTRACTOR TO PROVIDE AND INSTALL BENCHES AS INDICATED ON SITE PLAN AS MANUFACTURED BY LANDSCAPE FORMS, INC. - CONTACT: LUIS SALAZAR (269) 337-1314. MODEL "AUSTIN" BACKED BENCH, CANTILEVER, ALUMINUM, WITH END ARMS (TYPICAL OF 3)  
CONTRACTOR TO MATCH NEW BENCH WITH EXISTING BENCH AT THE CIVIC CENTER

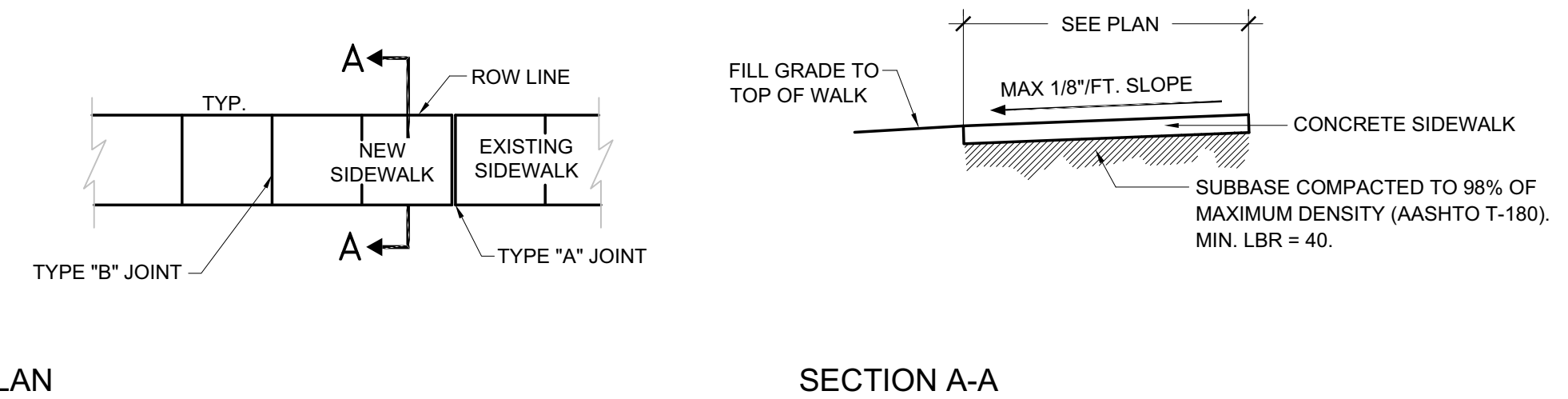
3 BENCH DETAIL

SCALE: NOT TO SCALE



4 SIDEWALK DETAIL AT RETENTION AREA

SCALE: N/A



TYPE "A"

P.C. AND P.T. CURVES. JUNCTION OF EXISTING AND NEW SIDEWALKS.

TYPE "B"

6'-0" CENTER TO CENTER ON SIDEWALKS.

TYPE "C"

WHERE SIDEWALK ABUTS CONCRETE CURBS, DRIVEWAYS AND SIMILAR STRUCTURES

SIDEWALK JOINT TYPES

CONCRETE SIDEWALK DETAIL NOTES

1. PROVIDE 1/8" CONTRACTION JOINTS AT 6' O.C. WITH A MINIMUM DEPTH 1-1/2", EDGED WITH A 1/4" RADIUS OR PROVIDE SAWED JOINTS 3/16" WIDE AND NOT LESS THAN 1-1/2" DEEP WITHIN THE FOLLOWING TIME PERIODS: JOINTS AT NOT MORE THAN 30' INTERVALS - WITHIN 12 HOURS AFTER FINISHING. REMAINING JOINTS WITHIN 96 HOURS AFTER FINISHING.
2. PROVIDE A 1/2" EXPANSION JOINTS WITH NON-RISING PREFORMED JOINT FILLER WHERE SIDEWALK ABUTS CONCRETE CURBS, DRIVEWAYS AND OTHER FIXED / EXISTING OBJECTS.
3. PROVIDE 4" THICK MINIMUM CONCRETE FOR ALL PEDESTRIAN SIDEWALKS.
4. PROVIDE 6X6 #8 WIRE MESH W/ 2" MINIMUM COVER.
5. CONCRETE TO BE 3,000 PSI IN 28 DAYS.
6. CURE ALL CONCRETE WITH CLEAN SAND, PLASTIC MEMBRANE OR OTHER APPROVED METHOD.
7. SIDEWALK FOUNDATION SHALL BE COMPACTED TO A FIRM, EVEN SURFACE, TRUE TO GRADE AND CROSS SECTION, AND SHALL BE MOIST AT THE TIME CONCRETE IS PLACED.
8. ALL CONSTRUCTION SHALL CONFORM TO LOCAL CONSTRUCTION CODES AND STANDARDS
9. GRADE ADJACENT LANDSCAPE AREAS TO MAX 1:4 (UNLESS OTHERWISE NOTED) SLOPE AWAY FROM NEW SIDEWALK / SLAB TO EXISTING GRADE. RE-SOD LANDSCAPE AREAS AFTER RE-GRADING.

5 TYPICAL CONCRETE SIDEWALK DETAIL

SCALE: NOT TO SCALE

2 TYPICAL ALUMINUM PICKET FENCE DETAIL

SCALE: 1/2" = 1'-0"

AAC  
PZ23-12000041  
02/06/2024

Abbas H. Zackria  
Digitally signed by Abbas H. Zackria  
Date: 2023.10.26 17:21:29 -04'00'

WALTERS ZACKRIA ARCHITECTS  
5813 N. ANDREWS WAY  
FORT LAUDERDALE, FL 33309  
PHONE: (954) 522-4123  
FAX: (954) 522-4128  
www.wza-architects.com

Abbas H. Zackria, FL AR 91520  
CORPORATE NAME: WALTERS ZACKRIA ASSOCIATES, PLLC REGISTERED IN THE STATE OF FLORIDA. WRITTEN DIMENSIONS TAKE PRECEDENCE OVER SCALED DIMENSIONS. THESE DRAWINGS ARE THE PROPERTY OF WALTERS ZACKRIA ASSOCIATES, PLLC, AND SHALL NOT BE REPRODUCED WITHOUT WRITTEN PERMISSION FROM A PRINCIPAL OF THE FIRM OR BE LIABLE FOR THE FULLEST LEGAL RECOURSE. CONTRACTOR SHALL VERIFY ALL EXISTING CONDITIONS AND DIMENSIONS AND NOTIFY THE ARCHITECT OF ANY DISCREPANCIES PRIOR TO EXECUTION OF WORK.

CITY OF POMPANO BEACH  
CHARLOTTE BURRIE COMM. CENTER  
PLAZA AND PASSIVE PARK  
2669 N FEDERAL HWY.  
POMPANO BEACH, FL 33064

DRAWN BY: JA  
CHECKED BY: AZ  
DATE: 08-21-2023  
REVISIONS:  
10-23-23 PERMIT CO-ORD

2203  
A0.40  
SITE DETAILS